

## E-Fiber Accessories

Modular electrospinning/electrospraying platform

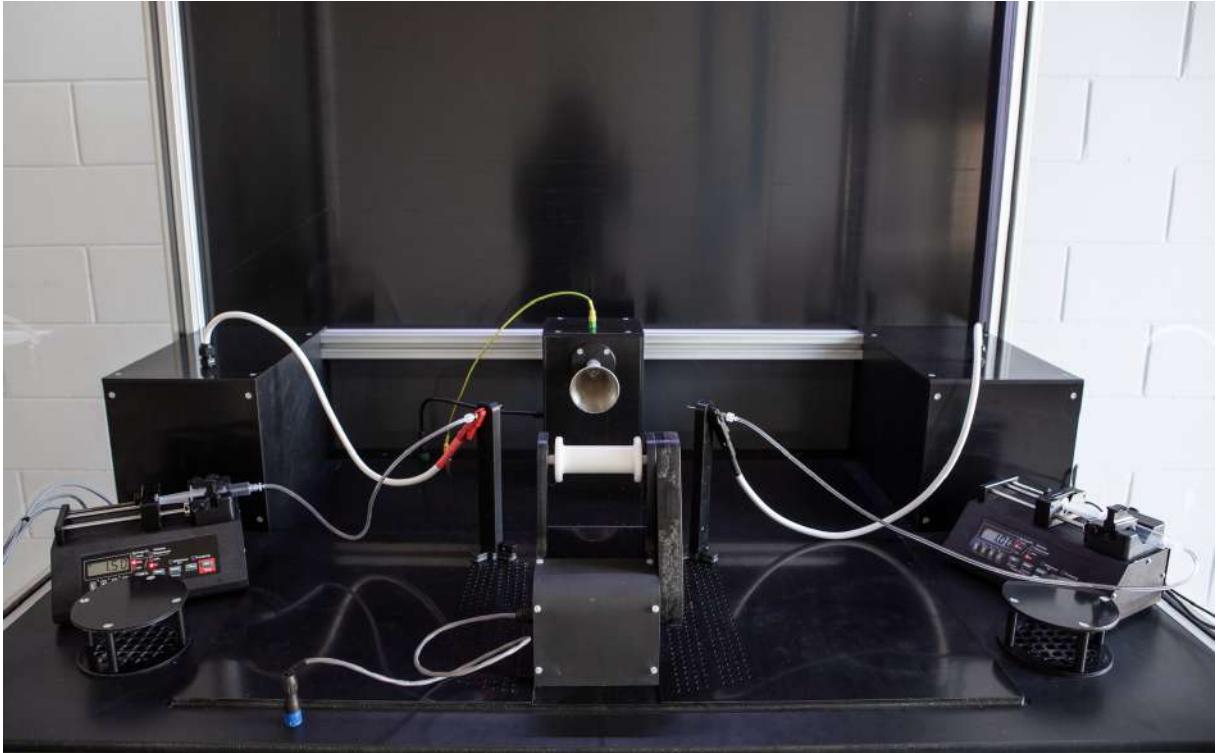
---



### **EFA330 - Thread Electrospinning Set-up**

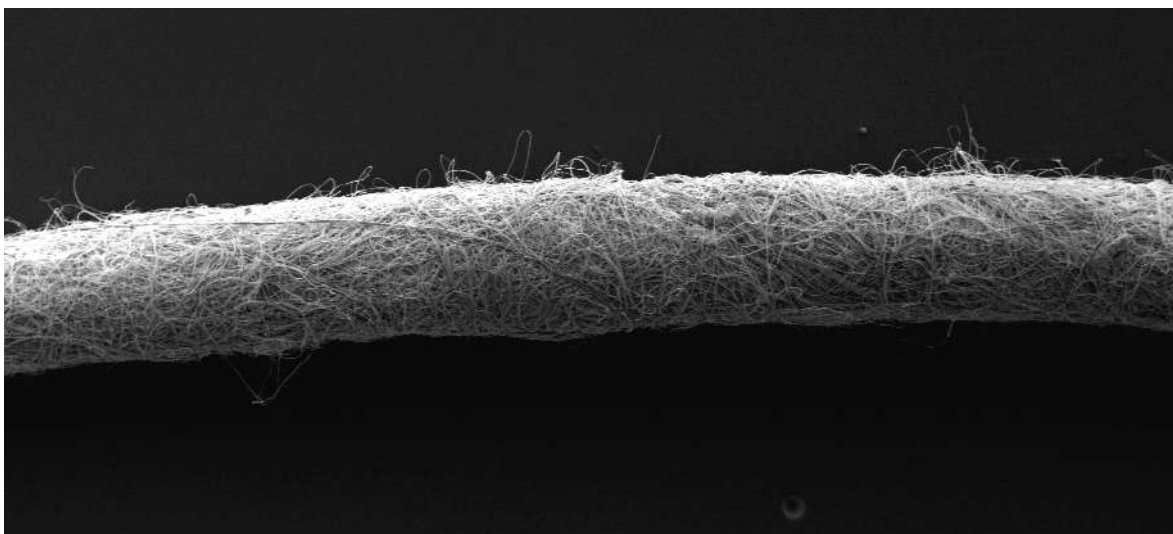
The Thread Electrospinning set-up allows the fabrication of nanostructured thread (or yarn), made up of several twisted nanofibers. Electrospun thread can be prepared using a wide range of materials, eventually loaded with active ingredients or doping agents.

This set-up can be integrated within SKE E-Fiber equipment EF300.



The Thread Electrospinning set-up consists of three parts:

- 1) a conical rotating collector, where the electrospun jets are collected and, because of its rotating motion, the yarn is formed. It is connected to ground.
- 2) two supports for spinneret, symmetric to the conic collector axes. The base allows easy adjustment of important parameters for the process, such as: distance between spinneret and collector, distance between the two spinnerets, angle orientation of spinneret with respect to the collector.
- 3) system for yarn winding: after the yarn is formed on the conical collector, it is placed on the rotating winding system, in order to have a stable and continuous production process.



## TECHNICAL DATA

Material	Plastic (PVC)
Weight	Approx. 8 kgs
Dimensions	880 x 685 x 250 mm (W x D x H)
Conical collector material	Aluminum
Conical collector rotating speed range	0 – 1200 rpm
System for yarn winding rotating speed	0 – 10 rpm
Distance between nozzles and collector	100 – 250 mm
Polarity	+/- 40 kV

## ORDERING DETAILS

Product code EFA330

---

### SKE Research Equipment®

C/O Leonardino Srl  
via Ghisalba 13  
20021 Bollate (MI) - Italy

tel: +39 02 4953 1694

[www.ske.it](http://www.ske.it)

Sales and information request: [sales@ske.it](mailto:sales@ske.it)